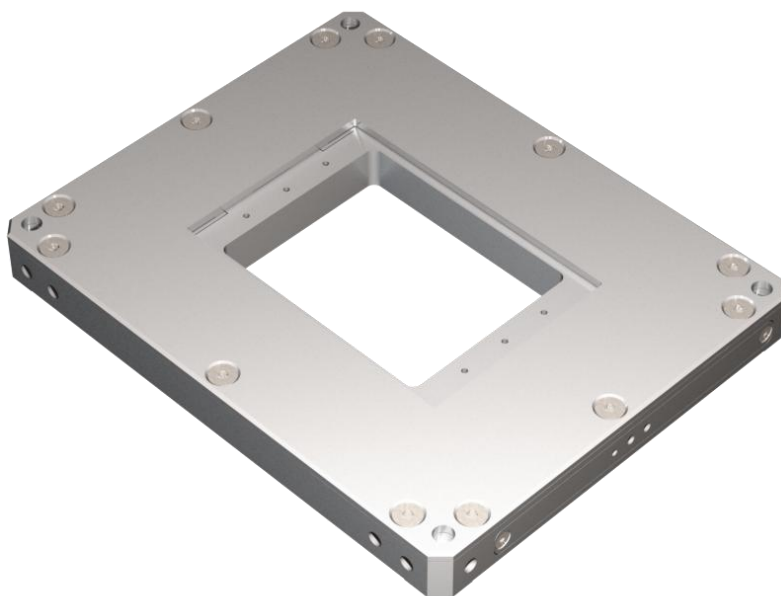


INSTALLATION AND OPERATION MANUAL
LTHS2



PIEZOCONCEPT
15 Rue du Bocage
69008 LYON
France

IMPORTANT SAFETY INFORMATION

The high voltage drivers can produce hazardous voltages and currents. Use caution when operating the drivers and when handling the linear actuators. Piezoactuators have large capacitance and are capable of storing hazardous amounts of electrical energy over long periods of time. Various conditions such as load and temperature changes can also cause piezoactuators to accumulate charge.

Before disconnecting the DB-9 connector from the PIEZOCONCEPT controller, first set the command voltage to 0.0V, then turn the AC power to the PIEZOCONCEPT controller off, and finally wait one minute before disconnecting.

The LTHS2 has no user serviceable parts. Only trained service personnel should perform service

IMPORTANT

All Technical Information, recommendations, and examples related to PIEZOCONCEPT Products made in this manual are based on information believed to be correct. The purchaser or user should determine the suitability of each product before using. The purchaser or user assumes all risks and liability whatsoever in connection with the use of any and all PIEZOCONCEPT products or services.

CONTENTS

1	INTRODUCTION.....	4
1.1	Unpacking the LTHS2.....	4
1.2	Handling the LTHS2.....	4
1.3	LTHS2.....	5
2	INSTALLATION.....	5
2.1	No fixturing.....	6
2.2	Installing using the M3 bored holes.....	6
3	GROUND LOOPS.....	6
3.1	Prevention and Identification of ground loops.....	6
4	OPERATING THE LTHS2.....	7
4.1	Operating in closed loop mode.....	7
4.2	Care during operation.....	7

1 INTRODUCTION

The LTHS2 is a PZT actuated linear nanopositioning stage of exceptional resolution and stability. The 83mmX66mm hole in the stage center is ideal for applications involving transmitted beams, multiple probes, or inverted optics. With its large distance of travel and high stability, the LTHS2 is ideal for the most challenging microscopy and positioning applications. The LTHS2 comes complete with position sensitive detectors for closed loop operation.

TRANSLATION (μm) (XY)	75 \pm 10%
VOLTAGE RANGE (V)	-15V to +150V
RESONANT FREQUENCY UNLOADED X-Axis (Hz)	1500 \pm 20%
RESONANT FREQUENCY UNLOADED Y-Axis (Hz)	1000 \pm 20%
MAXIMUM LOAD (hor/vert) (kg)	0.5/0.3
MASS (g)	1000
CABLE LENGTH (m)	>1.5m
CABLE CONNECTION	DB-9

1.1 Unpacking the LTHS2

Before unpacking the LTHS2, please read this entire operation manual, paying special attention to the following section on “**Handling the LTHS2**”. Remove the LTHS2 from its box and place on flat surface. Check the contents of the package against the shipping list and notify PIEZOCONCEPT immediately if any items are missing.

1.2 Handling the LTHS2

The LTHS2 is a high precision scientific instrument and therefore requires special handling in order to ensure proper operation. Mishandling can cause permanent damage to the LTHS2. To ensure a long and useful life the following guidelines should be strictly followed.

- a) **Never insert anything into the EDM grooves.** The EDM grooves are the cuts that form the flexure hinges, separate the moving portion of the stage from the stage frame, and form the amplifier. Severe damage may result if objects are inserted into these grooves.
- b) Always turn off the PIEZOCONCEPT controller before lifting the stage.
- c) Do not move the translation stage by pushing on it with your hands or any other object.
- d) Avoid applying a torque between the moving stage and the frame.

- e) Do not drop, treat roughly, or physically shock the LTHS2.
- f) Do not lift by the cables.
- g) The surface to which the LTHS2 is mounted to should be flat and clean. Likewise, the bottom of the LTHS2 should be free of particles and dust before mounting.
- h) Do not immerse in any liquid. If the LTHS2 requires cleaning, slightly dampen a lint free cloth with iso-propanol or ethanol and lightly wipe the surface. Do not get any liquid or lint into the EDM grooves.
- i) Never disassemble the LTHS2, there are no serviceable parts inside.

1.3 LTHS2

The LTHS2 is manufactured from a high performance Al alloy. PZT actuators are preloaded within the LTHS2 and supply the driving force for stage movement. The flexure hinges, which form the guidance mechanism, are cut into the stage using electric discharge machining (EDM). There are no serviceable parts in the LTHS2 stage.

Two direction arrows are located on the side of this stage for X and Y. These arrows indicate which direction the stage moves when a positive voltage is applied. Two DB-9 connectors, one for each axis of motion, are supplied with the LTHS2. These connectors are labeled X, Y for identification. This identification describes which driver axis that particular stage should be connected to.

Never disassemble the LTHS2, there are no serviceable parts inside.

2 INSTALLATION

The LTHS2 should be installed horizontally. It is always advisable to minimize the load carried by the LTHS2. Heavier loads reduce the stage response time, can cause oscillations, and may cause fatigue and /or reduced motion.

There are two different ways to install the LTHS2 into your application. These choices are: simply placing the LTHS2 in the desired spot or using the mounting holes. The choice of installation depends on your specific application and on how often you wish to remove the LTHS2.

Regardless of how you choose to install the LTHS2

- a) Make sure the surface to be mounted to is clean, flat, and free of burs.
- b) Using a lint free cloth, gently wipe off the bottom of the LTHS2 to remove any particles or dust.
- c) Always lift the LTHS2 by the bottom stage.

- d) Never lift, position, assemble, or disassemble the LTHS2 with power applied.
- e) **IMPORTANT!** Check for ground loops (**Section 3**) between the LTHS2 and the mounting surface.

2.1 No fixturing

The LTHS2 can be mounted simply by placing it in the desired location. The mass of the LTHS2 is enough to keep it in place during most scanning or positioning applications.

2.2 Installing using the M3 bored holes

The LTHS2 stage has four holes for M3 screws, positioned on 176X136mm rectangle. When securing the LTHS2 the mounting surface must be flat and the mounting surface and bottom of the LTHS2 must be clean.

3 GROUND LOOPS

The single greatest danger to your nanopositioning system is a ground loop between the stage and the mounting surface. Ground loops can be the source of noise in the LTHS2, and in some cases the oscillations may be severe enough to permanently damage the piezoactuators.

3.1 Prevention and Identification of ground loops

Ground loops may sometimes be detected by a voltmeter and can usually be detected by using the differential mode of a dual channel oscilloscope.

Prevention of ground loops can be achieved in two ways. The most effective and simplest method is to insulate the stage from the mounting surface (e.g. mylar or paper between the stage and mounting surface). The second method is to connect the PIEZOCONCEPT controller ground to the mounting surface. The stage is connected directly to the ground of the PIEZOCONCEPT controller, which in turn is connected to the ground of the AC power cord.

Should you observe unexpected permanent oscillations in your nanopositioning stage after you have switched on the power, this likely indicates the continued presence of a ground loop. **SWITCH THE SYSTEM OFF IMMEDIATELY AND SEARCH FOR THE SOURCE OF THE GROUND LOOP. SHOULD THE PROBLEMS CONTINUE PLEASE CONTACT PIEZOCONCEPT FOR TECHNICAL ASSISTANCE.**

4 OPERATING THE LTHS2

The LTHS2 comes complete with position sensitive detectors for closed loop operation. In closed loop operation, achieved using the PIEZOCONCEPT controller, the effects of creep and hysteresis are removed and the position is held constant at the command position.

4.1 Operating in closed loop mode

The LTHS2 comes with 9 pin D-type connectors and uses the PIEZOCONCEPT controller for complete positioning control. To operate in closed loop mode use the following procedure.

- Install the LTHS2 as discussed in **Section 2**.
- Turn the PIEZOCONCEPT controller power off.
- Set the command signal to 0.0 Volts either on the analog interface or the digital interface.
- Connect the 9 pin D-type connector to the PIEZOCONCEPT's controller, secure the two screws.
- Turn the power switch on.
- The command voltage now controls the position of the nanopositioning stage.

Never disconnect the 9-Pin connector with the power on. Always set the command voltage to zero and turn the power off before disconnecting. Allow 1 minute for the PZT actuators to discharge before disconnecting. For more information see the “**PIEZOCONCEPT CONTROLLER OPERATION MANUAL**”.

4.2 Care during operation

The LTHS2 is a high precision scientific instrument and should be handled with care during operation. Failure to do so may result in permanent damage.

- a) During operation ensure that there are no physical constraints on the moving stage or anything fixtured to the moving stage.
- b) Never apply a voltage greater than 150V or less than -15V to the PZT.
- c) Maintain a clean working environment to reduce the chance of particles or other substances from gathering in the EDM grooves.